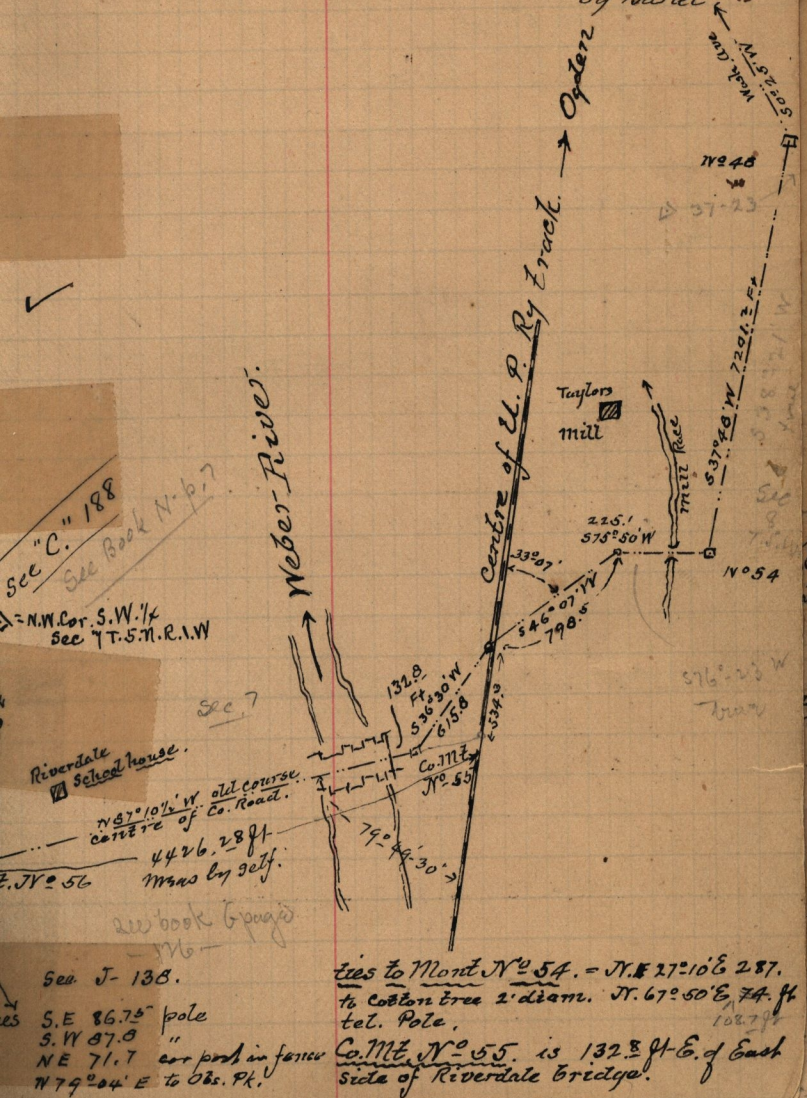


Notes taken by R.W. Farris Co. Surveyor  
re-measurement of Co. Road from Ogden to Riverdale  
May - 1892.  
by Bethel



Sec "C." 188  
See Book N. p. 7  
N.W. Cor. S.W. 1/4  
See T. 5. N. R. 1. W

Riverdale School house.  
N 67° 10 1/2' W old course  
centre of Co. Road.  
4426.28 ft  
Mans by self.

See book (Gauges)  
— 116 —  
See J-138.  
S. E 86.75 pole  
S. W 87.0 "  
NE 71.7 cor post in fence  
N 79° 04' E to Obs. Pt.

ties to Mont No 54. = N. E 27° 10' E 287.  
to Cotton tree 2' diam. N. 67° 50' E 74. ft  
tel. Pole.  
Co. Mill No 55. is 132.8 ft E. of East  
side of Riverdale bridge.